

M 6.8, MYANMAR

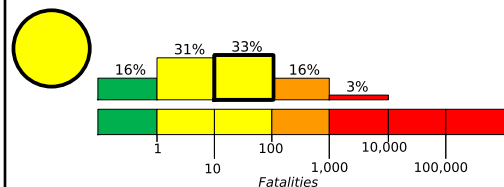
Origin Time: Wed 2016-08-24 10:34:55 UTC (16:34:55 local)

Location: 20.92°N 94.58°E Depth: 84 km

PAGER Version 1

Created: 19 minutes, 37 seconds after earthquake

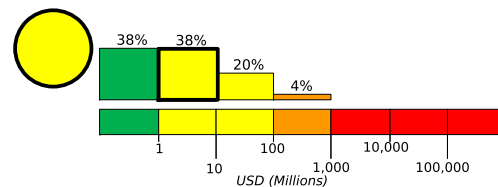
Estimated Fatalities



Yellow alert for shaking-related fatalities and economic losses. Some casualties and damage are possible and the impact should be relatively localized. Past yellow alerts have required a local or regional level response.

Estimated economic losses are less than 1% of GDP of Myanmar.

Estimated Economic Losses

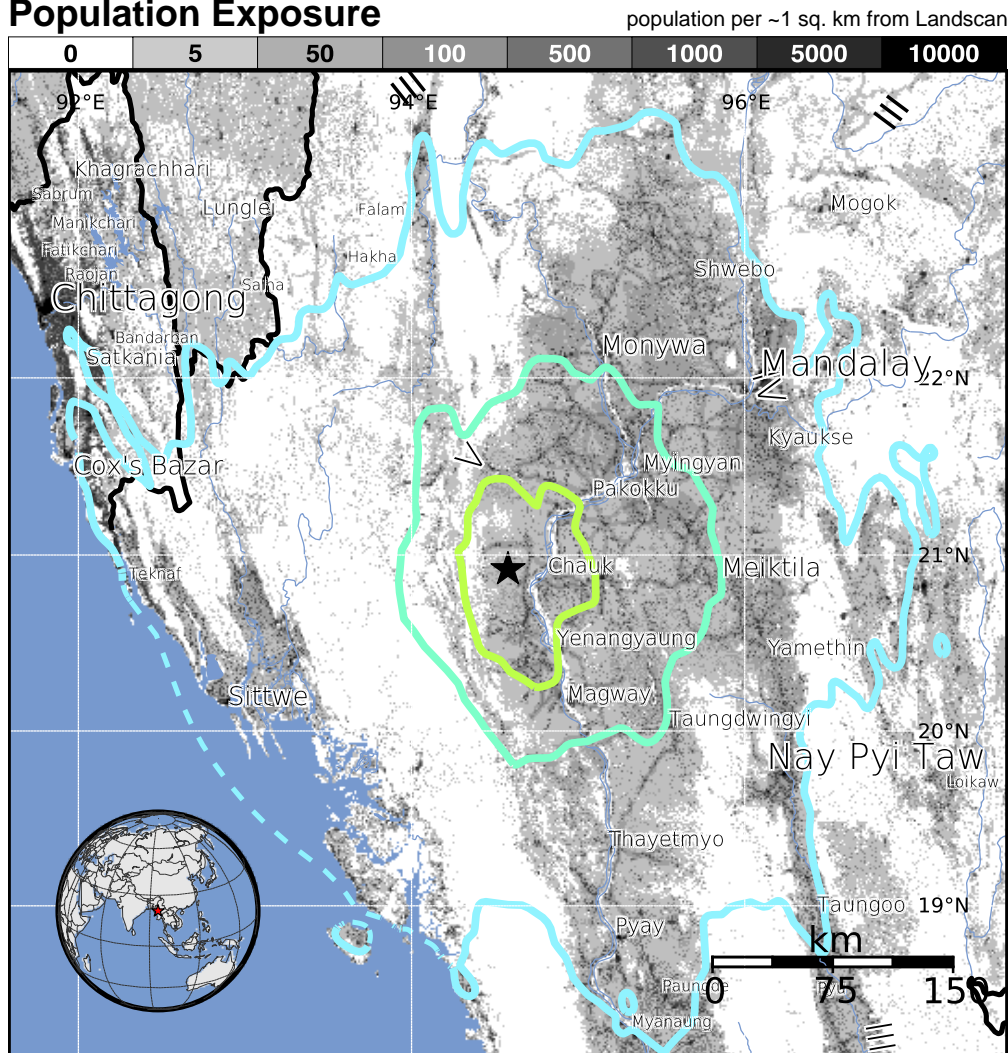


Estimated Population Exposed to Earthquake Shaking

ESTIMATED POPULATION EXPOSURE (k = x1000)	- - *	14,187k*	20,709k	5,384k	1,528k	0	0	0	0
ESTIMATED MODIFIED MERCALLI INTENSITY	I	II-III	IV	V	VI	VII	VIII	IX	X+
PERCEIVED SHAKING	Not felt	Weak	Light	Moderate	Strong	Very Strong	Severe	Violent	Extreme
POTENTIAL DAMAGE	Resistant Structures	none	none	none	V. Light	Light	Moderate	Moderate/Heavy	Heavy
	Vulnerable Structures	none	none	none	Light	Moderate	Moderate/Heavy	Heavy	V. Heavy

*Estimated exposure only includes population within the map area.

Population Exposure



Structures:

Overall, the population in this region resides in structures that are highly vulnerable to earthquake shaking, though some resistant structures exist.

Historical Earthquakes (with MMI levels):

Date (UTC)	Dist. (km)	Mag.	Max MMI(#)	Shaking Deaths
2000-11-13	195	5.4	VII(2k)	0
1975-07-08	59	6.5	VI(352k)	1
1991-01-05	323	6.9	IX(28k)	2

Recent earthquakes in this area have caused secondary hazards such as landslides that might have contributed to losses.

Selected City Exposure

from GeoNames.org

MMI City	Population
VI Chalk	91k
V Yenangyaung	111k
V Pakokku	127k
V Minbu	57k
V Myingyan	142k
V Magway	97k
IV Mandalay	1,208k
IV Sittwe	178k
IV Nay Pyi Taw	925k
III Chittagong	3,920k
III Taunggyi	160k

bold cities appear on map

(k = x1000)

PAGER content is automatically generated, and only considers losses due to structural damage. Limitations of input data, shaking estimates, and loss models may add uncertainty.

<http://earthquake.usgs.gov/earthquakes/eventpage/us10006gbf>

Event ID: us10006gbf